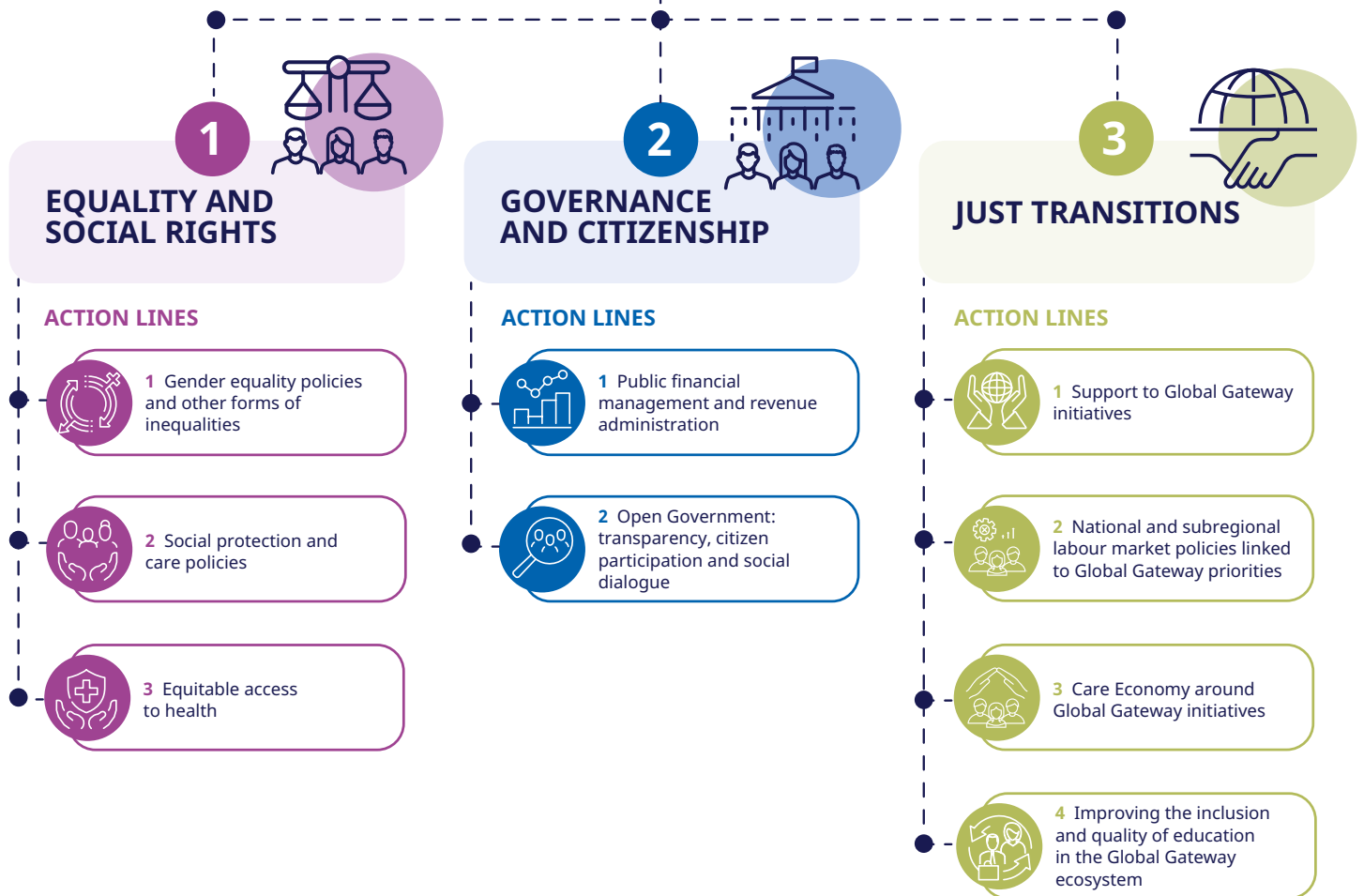


Inclusive Societies Regional Programme

#GlobalGateway #TeamEurope

Inclusive Societies is a EU Regional Programme that aims to reduce gender and other inequalities in Latin America and the Caribbean, with a focus on women, youth and vulnerable groups including the poorest 40% of the population. It will strengthen the social dimension of the **EU-LAC Global Gateway Investment Agenda** with a 360-degree approach, providing opportunities for collaboration between the public, private and non-profit sectors.

Scope of the Programme



PROGRAMME DURATION

54 months
January 2025 – June 2029



BUDGET

Total: **€45** Millions
EU contribution: **€43** Millions

Cofunded by:



Implemented by:

Consortium Lead:



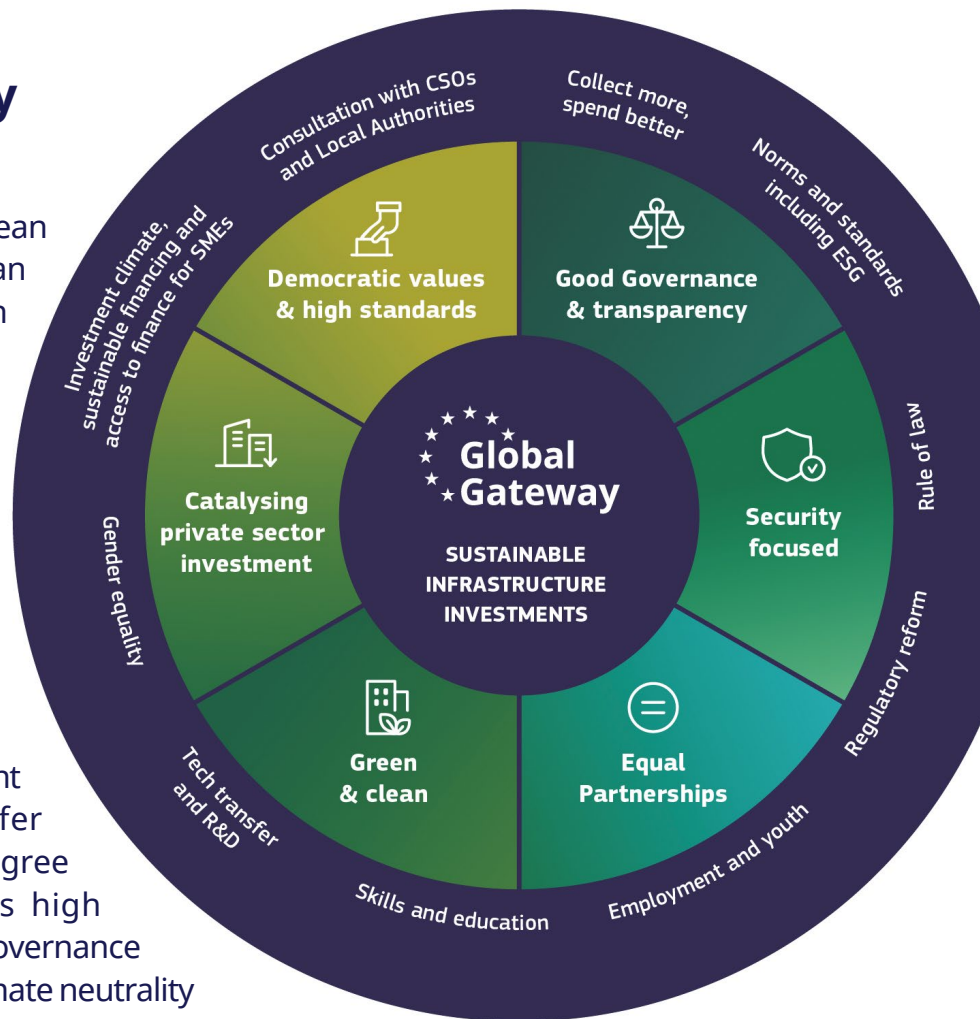
Inclusive Societies Regional Programme

#GlobalGateway #TeamEurope

Social dimension of Global Gateway

Global Gateway is the European strategy to boost smart, clean and secure connections in digital, energy and transport sectors, and to strengthen health, education and research systems in the region. It's fully aligned with the UN's Agenda 2030 and its Sustainable Development Goals and the Paris Agreement.

The Global Gateway Investment Agenda is a qualitative offer that takes a holistic, 360-degree approach, which promotes high social, environmental and governance standards (ESG), supports climate neutrality and the green and digital transition and enhances respect for human rights, the rule of law, non-discrimination and promoting decent work, education, gender, youth, social rights and the reduction of inequalities.



Global Gateway Sectors



Digital



Climate and
Energy



Transport



Health



Education and
Research

Inclusive Societies Regional Programme

#GlobalGateway #TeamEurope

1. EQUALITY AND SOCIAL RIGHTS



Gender equality policies

- Support to national equality mechanisms for the design and implementation of national and regional gender strategies and for incorporating the gender approach.
- Promotion of women's empowerment and measures of economic, financial, and social autonomy.
- Support the prevention of and sanction against gender-based violence and related physical autonomy measures.
- Support inclusive leadership and women's equal participation in decision-making.
- Promote multidimensional assessments of inequality at the national and/or subnational level.



Social protection and care policies

- Support social protection systems.
- Support comprehensive and gender-transformative national care systems.
- Promote public-private strategies to support targeted investment opportunities in the care economy across the life cycle.



Equitable Access to Health

- Support the EU-LAC Partnership on Health Resilience and Equitable Access to Health Products.
- Improve access to essential medicines, vaccines, diagnostics and devices for primary health care.
- Support health insurance system expansion and universal coverage in coordination with social protection initiatives.

Inclusive Societies Regional Programme

#GlobalGateway #TeamEurope

2. GOVERNANCE AND CITIZENSHIP



Public financial management and revenue administration

Quality of public spending:

- Enhance gender-transformative, youth-oriented, green budgeting frameworks in all phases of the budget cycle.
- Support public procurement and concessions practices, prioritizing quality, and incorporating environmental, social, gender and innovation criteria.

Revenue administration:

- Promote digitalisation for better data governance, control, and taxpayer services.
- Promote the modernisation of the tax system for equitable, inclusive, and sustainable growth by addressing the progressivity of the tax system.
- Promote the revision of tax incentives to support sustainability and social inclusion.



Open Government: transparency, citizen participation and collaboration

- Improve fiscal and budget transparency, business-to-government (B2G) data sharing to improve public services and supporting Open Contracting by connecting governments, citizens and businesses through data.
- Inclusion of civil society, the private sector and other stakeholders in public consultations and other citizen participation mechanisms.
- Promotion of 'Tripartite Social Dialogue - Multi-dialogues' to ensure decent work in line with international labour standards.

Inclusive Societies Regional Programme

#GlobalGateway #TeamEurope



3. JUST TRANSITIONS



Support to Global Gateway Initiatives

- Promotion of TVET for young people, especially women, to enhance their employability and facilitate job placement in investment projects.
- Support for employment plans based on job opportunities generated by Global Gateway Investment Agenda initiatives.
- Development of local demonstration projects to strengthen Global Gateway Investment Agenda initiatives in the territories and maximize their social impact.



National and subregional labor market policies linked to Global Gateway priorities

- Support to the reconversion of sectors and territories affected by transitions, using the tools of TVET, retraining, and employment programs.
- Support to national programs and measures that promote employment in the green and digital transitions.
- Development of green profiles and competencies within the framework of the Pacific Alliance.



Care Economy around Global Gateway Initiatives

- Support to the expansion of care services.
- Support for care policies: professionalization, certification, and formalization of caregivers.
- Promoting new public-private investments in key sectors that generate employment opportunities.



Improving the inclusion and quality of education in the Global Gateway ecosystem

- Support to improve educational quality and inclusion programs, student retention, teacher training, and basic skills.
- Support to access education measures and children education promotion (including care).